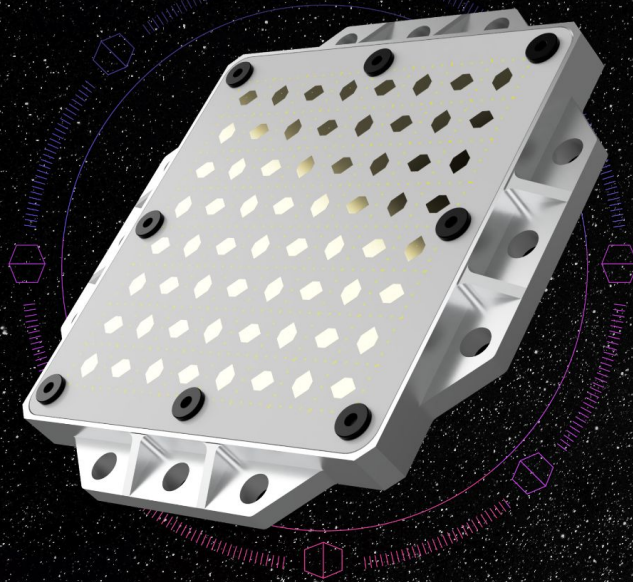


## BEAMSAT

### KA - BAND PATCH ANTENNA



PLANAR HIGH-GAIN 8X8 PATCH ANTENNA FOR LEO EARTH OBSERVATION HIGH THROUGHPUT DATA AND TELEMETRY DOWNLINK APPLICATIONS

## OVERVIEW

The **high-gain Ka-band 8x8 patch antenna**, is designed for nano, micro and small satellites. It can be supplied **with or without an enclosure** weighing **75 g** (with enclosure), offering a simple and **efficient mounting solution** to the satellite's external structure occupying less than **1 U surface**. Its peak gain of **22 dBi** and its **compact design** make it ideal for a wide range of missions ensuring high data rate transmission with no compromises.

### APPLICATIONS

- LEO Earth Observation data downlink
- Cubesats and Smallsats Telemetry



---

# MAIN PARAMETERS

---

FREQUENCY	27-31 GHz
PEAK GAIN	22 dBi
INPUT MATCHING	<-15 dB
HPBW	10.2°
AXIAL RATIO	< 1.5 dB
POLARIZATION	RHCP
CONNECTOR	SMP

---

## MECHANICAL PROPERTIES

---

MASS	76 g (with enclosure)
VOLUME	78.0 mm x 78.0 mm x 13.5 mm (with enclosure)

---

